

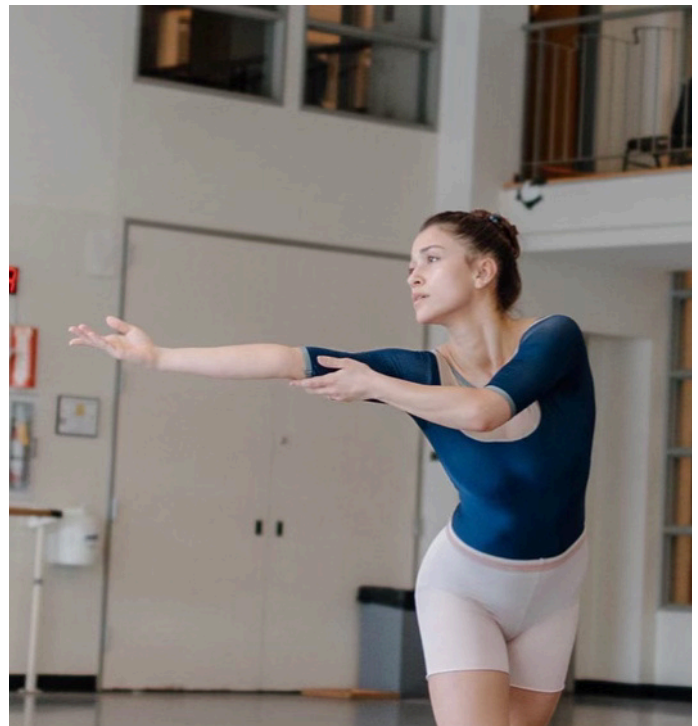
EMMA GREENAWALT

Emma began dancing at the age of two at the School of Ballet Indiana, located in her hometown in Southern Indiana. During her training, she spent summers dancing at Central Pennsylvania Youth Ballet and Pacific Northwest Ballet.

At the age of 18, she joined Pacific Northwest Ballet's Professional Division, where she performed numerous ballets with the professional company, including *The Nutcracker*, *Swan Lake*, *Giselle*, *A Midsummer Night's Dream* and the World Premiere of Crystal Pite's *The Seasons' Canon*. She also danced features roles in the PNB Schools performances including Noah Martzells' *In absence of*, Amanda Morgan's *Unfinished Symphony* and George Balanchine's *Serenade (Russian Girl)*.

In 2023, Emma joined Ballet Tucson as an apprentice. After just one year, she was promoted, at age 21 to Corps de Ballet in Fall 2024. Emma performed numerous recognizable Balanchine ballets with Ballet Tucson including *Divertimento No. 15* and *Rubies*, as well as several original pieces choreographed by BT's resident choreographer, Chieko Imada. She ended her second season with Ballet Tucson by performing one of the principal roles in Justin Peck's *Pulcinella Variations*, as well as the Principal Women in Kiyon Ross' *ə{schwa}*.

SBI is excited to welcome back, our alumni, Emma, for our June Session. Miss Emma will be offering YAGP choreography and coaching, along with Privates lessons.



ABOUT

THOMAS KINGSBURY

Thomas Kingsbury is from Canton, Ohio, where he began his training with the Canton Ballet at 9 years old. He then joined the Colburn Dance Academy in Los Angeles at 15, spent 2 years in the Pacific Northwest Ballet's Professional Division, and was hired into the Carolina Ballet for at the start of the 2024/2025 season.

Thomas has spent summers at Central Pennsylvania Youth Ballet, The School of American Ballet, the Pacific Northwest Ballet, and the Chautauqua Institution.

Throughout his career and training he has performed many principal roles, his favorites being George Balanchine's Donizetti Variations and Serenade. Thomas has also been a part of many contemporary productions, by the likes of Crystal Pite, Robyn Mineko Williams, and many more.

We are excited to partner with Mr. Thomas in SBI's June Session. Mr. Thomas will be offering private lessons while at SBI in June.

